

KENTEC COMMUNICATIONS, INC.

Networking ...

Your High-Speed Connection



Photography AcclaimImages.com Photography

Revised: 08/01/06



Dial Up Networking ...

Sharing an Internet connection on multiple computers usually refers to some sort of connection designed to connect two or more computers together to form a typical home network. While this is possible with dial-up, it is extremely inefficient and typically isn't worth the effort.

Dial-up is a narrow-band (or low-speed) Internet connection and sharing it between two computers in most situations simply isn't practical. Setting up Internet connection sharing for dial-up will not be covered.

The most effective solution is to ensure each computer has a modem and a phone line then set up dial-up Internet on both machines by following our Dial-up Setup booklet for your version of Windows.

Pros of setting up internet connection sharing on dial-up:

- ⇒ Internet connection is now available on more than one PC
- ⇒ Assuming all computers have modems and phone line connection available, this solution is at no additional charge

Cons of setting up internet connection sharing on dial up:

- ⇒ Computers may not use the Internet simultaneously

Networking on a DSL Connection

Setting up internet connection sharing on DSL is easy.

Needed materials:

⇒ 3 network cables (of appropriate length)

⇒ 1 network switch or hub

Overview:

Basically, to set up a network of multiple wired (or networked) computers, all that is necessary is to plug everything together.

First, find an appropriate spot for your network hub or switch. Ideally, this would be in between your new computers and DSL modem but is sometimes set directly beside the modem.

After plugging in the switch/hub to an adequate power source, connect the DSL modem to the switch via a network cable. It does not matter which port or number you plug into on the switch/hub.* If you are using a Linksys or other brand of router, please make sure to plug the DSL modem into the Internet or WAN port.

Finally, plug in the other computers to the switch via network cables then turn the computers on. The computers should not require any additional setup and should automatically acquire their settings from the DSL modem.

Open Internet Explorer to see if there is internet connectivity. If not, please call 522-8107 and ask for technical support.

Networking on a Wireless Connection

To use multiple machines on a wireless connection, you will have to activate Windows ICS (Internet Connection Sharing) feature.

ICS is available in Windows 98SE (second edition) and later. This includes:

- ⇒ Windows 98SE
- ⇒ Windows ME
- ⇒ Windows 2000
- ⇒ Windows XP
- ⇒ This DOES NOT include Windows 98, Windows 95, Windows 3.x, or DOS-only systems

Equipment needed (if adding a single wired computer):

- ⇒ Network crossover cable
- ⇒ A regular network cable and a crossover adapter

Equipment needed (if adding multiple computers or a wireless network):

- ⇒ A router with wireless capabilities for wireless
- ⇒ OR for a wired-only network, a hub/switch
- ⇒ Network cable totaling the number of wired computers (plus the router network cable)

To install the hardware on your computer-to-computer network, you need to plug in the network cable (crossover cable or crossover adapter) to both machines. To connect your computers using a switch or router, get an Ethernet (network) cable for each computer then plug each computer into the switch or router.

If you are using a router, make sure you have the network cable from the main computer (the one with wireless internet installed on it) running to the Internet or WAN port on the router.

To set up Internet connection sharing with Windows XP, follow these steps:

- ⇒ Click on Start
- ⇒ Click on Run
- ⇒ From the Run open box, type 'control netconnections' in the box then click OK
- ⇒ Right click on your Wireless Network connection then go to Properties
- ⇒ Click the 'Advanced' tab at the top right of the Properties window
- ⇒ Check the option that says (something to the effect of) 'Allow Other Network Users to Connect Through this Computer's Internet Connection'
- ⇒ If the option says "Allow Other Network Users to Disable or Control this Connection" is checked, uncheck it.
- ⇒ Click OK

To set up Internet Connection Sharing in Windows 2000, follow these steps:

- ⇒ Click on Start
- ⇒ Click on Settings
- ⇒ Click on Network and Dialup Connections
- ⇒ Right click on Your Local Area Connection 2**
- ⇒ Click Properties
- ⇒ Click the 'Sharing' tab at the top of the new window
- ⇒ Check the option that says 'Turn on Internet Connection Sharing'
- ⇒ Click OK

** NOTE: Make sure the connection you right-click on says Cisco 350 ... underneath the connection name. This connection will be your wireless network connection.

To set up Internet connection sharing in WindowsSE or WindowsME, follow these steps:

- ⇒ Open 'My Computer'
- ⇒ Click 'Control Panel'
- ⇒ Open 'Add/Remove Programs'
- ⇒ Click the 'Windows Setup' tab at the top of the window
- ⇒ Double click 'Internet Tools'
- ⇒ Check 'Internet Connection Sharing'
- ⇒ Click OK
- ⇒ Click OK again
- ⇒ Follow the instructions in the Internet Connection Sharing wizard that pops up
- ⇒ When prompted, reboot the computer

Once your connections are made and your main computer is set up with Internet Connection Sharing, you should be ready to use the internet on your other computers. If they do not work immediately, reboot them and try again.

If you experience any trouble or difficulty installing your network, please call 522-8107 and ask for technical support.

NOTE: Firewalls are notorious for causing Internet Connection Sharing to fail. If your secondary computers do not work or you start seeing messages on these computers such as 'Limited or no connectivity', try disabling the firewall on your primary computer then reboot the non-working machine.

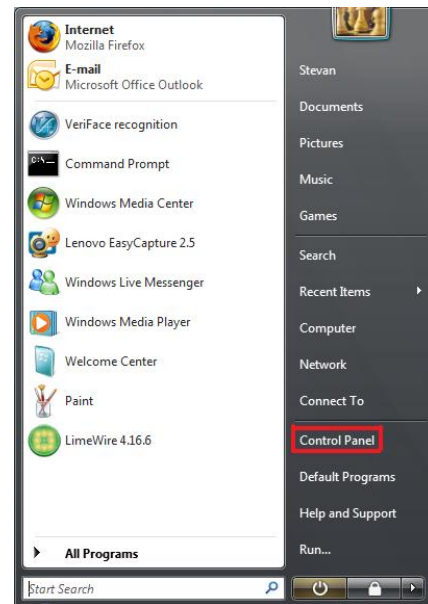
If this works, do NOT leave the firewall turned off!

Seek assistance to properly configure your firewall by calling 522-8107 for technical support.

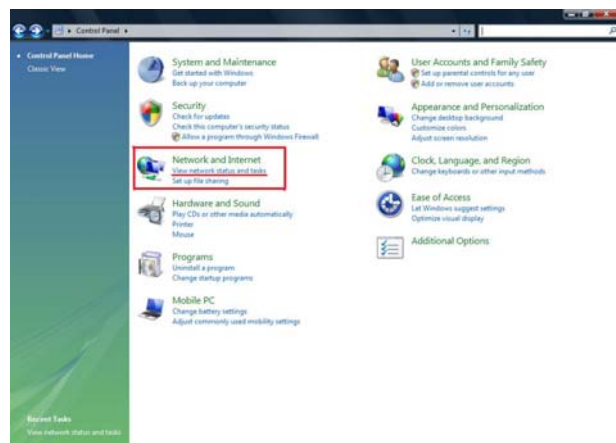
Networking on a Vista Computer

On the main computer (which the wireless was installed), follow these steps to share the internet connection:

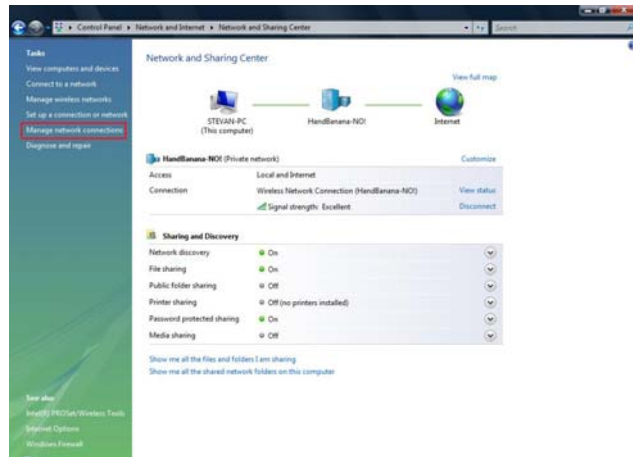
1. Log on to the host computer as Administrator, or Owner.
2. Click Start, and then click "Control Panel".
3. You will now be in the window that shows you a variety of different tasks. Look for the "Network and Internet" task, and click on 'view network status and tasks'.



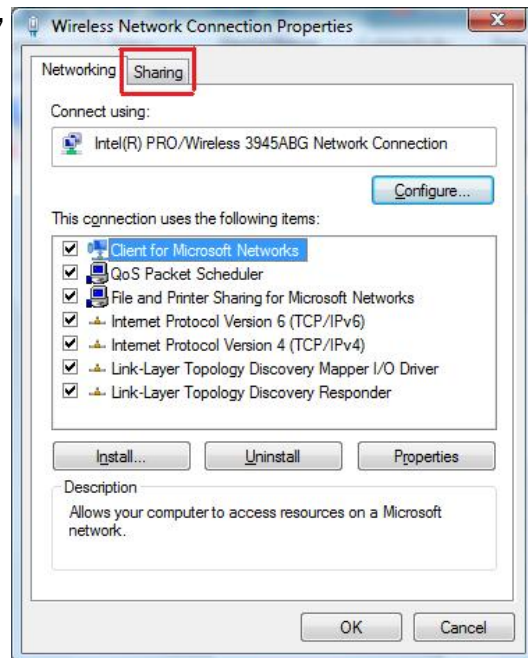
4. To the left, you will need to open "Manage Network Connections"



5. Now, you should find Local Area Connection, or Wireless. Right click on the Wireless Connection, and go to properties.



6. In properties, you should find two tabs (Networking, Sharing) click on Sharing.



6. Below you should see boxes to be check marked for "Internet Connection Sharing", otherwise known as ICS.

7. Click "OK" and you should be all set, and ready to go!

